



DRAWWORKS/POWER

NATIONAL T-32 Single Drum Drawworks, S/N-N/A, 400-HP, LEBUS Grooved f/1-1/8" Line, AMERICAN Makeup & Breakout Catheads, Rotary Table Drive, Quad Water Brake, Driller's Control Console w/Air Controls, Skidded Single Engine Compound, p/b DETROIT Series 60 Diesel Engine, S/N-N/A, w/Air Starter, Radiator, Gauges, TWIN DISC F11524-TC-1 Torque Converter, Air Compressor, Skidded

MAST/SUB STRUCTURE

LEE C. MOORE 96'H Cantilever Mast, S/N-N/A, 200,000# SHL, Crown Block, Crown Safety Platform, Racking Board, Standpipe, Standpipe Manifold w/Gate Valves, Pressure Gauge, Mast Stand
7'H x 17'W x 43'L Box-Type Substructure, Skidded



MUD PUMPS



GARDNER DENVER GXP Duplex Mud Pump, S/N-N/A, 7-3/4" x 16", 700-HP, Steel Fluid End w/Quick Change Valve Cover & Cylinder Head Caps, Suction & Discharge Manifolds, Surge Chamber, Shear Relief Valve, Pressure Gauge, Master Skidded, p/b DETROIT Series 60 Diesel Engine, S/N-N/A, w/Air Starter, Radiator, Gauges, Skidded

NATIONAL C250 Duplex Mud Pump, S/N-N/A, 250-HP, 7-1/4" x 15", Steel Fluid End w/Quick Change Valve Cover & Cylinder Head Caps, Suction & Discharge Manifolds, Surge Chamber, Shear Relief Valve, Pressure Gauge, Master Skidded, p/b CAT D343 Diesel Engine, S/N-N/A, 375-HP, w/Air Starter, Radiator, Gauges, Skidded



GENERATOR/GENERATOR HOUSE

SDMO J120 Electric Generator, p/b JOHN DEERE 6.8L 6-Cylinder Diesel Engine, w/Electric Starter, Radiator, Gauges, Skidded

150-KW Electric Generator, p/b PERKINS 6-Cylinder Diesel Engine, w/Electric Starter, Radiator, Gauges, Skidded

INDUSTRIAL AIR Air Compressor, p/b 7-HP Electric Motor, Mounted on Air Volume Tank Above Mounted in 10'W x 42'L Generator House, w/Electric Control Panel, Breakers,



Switches, Wiring, Connections, Skidded



MUD SYSTEM

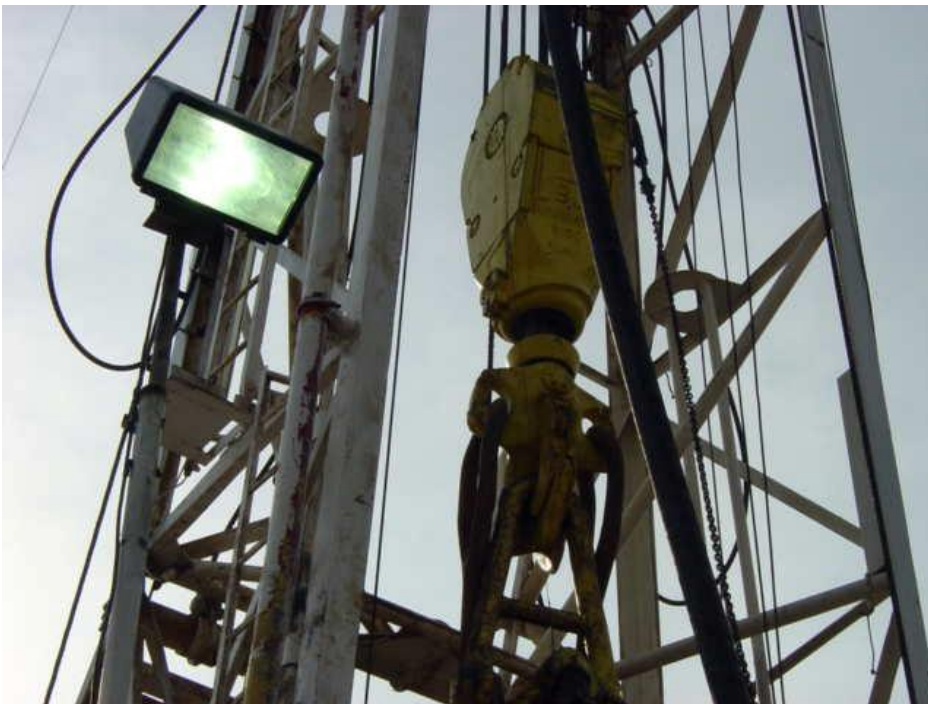
12'W x 5'H x 50'L 460-Barrel, 6-Compartment Mud Tank, w/Internal Plumbing, Top Mounted Walkways, Stairs, Safety Rails, Skidded
 HARRISBURG Low Profile 4' x 5' Single Shale Shaker
 Single Cone Desander, 5" x 6" Centrifugal Pump p/b ALLIS CHALMERS Diesel Engine, w/Electric Starter, Radiator, Gauges, Skidded, Mounted on Tandem Axle Trailer

WELL CONTROL EQUIPMENT

REGAN 10" 3,000# PSI Annular Blowout Preventer
 PAYNE Closing Unit w/Accumulator Bottles, Air and Hydraulic Pumps, Skidded

ROTATING/TRAVELING/WELL CONTROL EQUIPMENT

BJ 150-Ton Traveling Block/Hook Combination, S/N-N/A, w/(4) Sheaves, 1-1/8" Line
 GRAY 500-Ton Rotary Swivel
 TRI SERVICE 17-1/2" x 44" Rotary Table, w/Master Bushing
 4-1/4" x 40'L Square Kelly
 4KRVS Kelly Drive Bushing
 Elevator Links



HANDLING TOOLS

BJ Type C Drill Pipe Tongs w/Extra Heads
 Drill Pipe Elevators
 Drill Collar Elevators
 4-1/2" Drill Pipe Slips, Drill Collar Slips, Casing Slips
 Pneumatic Drill Pipe Spinner

RIG HOUSES

10'W x 40'L Top Dog House/Parts House/Change House, w/Knowledge Box, Lockers, Parts Storage, Lights, Wiring, Skidded
 1974 AVION Lagrande 32'L Tandem Axle Tool Pusher's Trailer, Furnished, OK Lic #071-ZQU
 4" x 5" Centrifugal Mud Mixing Pump, p/b JOHN DEERE Diesel Engine, w/Electric Starter, Radiator, Gauges, Mud Mixing Hopper, Mounted on 6'W x 15'L Covered Mud Mixing Skid

WATER/FUEL TANKS/LUBESTER

10'W x 8'H x 40'L 500-Barrel Water Storage Tank, Skidded



7,000-Gallon Diesel Fuel Tank, Skidded
8'W x 4'H x 2'D 3-Compartment Lubester, Skidded

AUXILIARY EQUIPMENT

BEAR Automatic Driller
WAGNER 360,000# Weight Indicator
Hydraulic/Electric Wireline Measuring Device
Rotary Hose, Vibrator Hoses, Suction Hoses w/Pipe
Mud Bucket
4'W x 24"H x 50'L Catwalk, Skidded
2-Sets (4-Each) 24"H x 28'L Triangular Pipe Racks
Assorted Crossover Subs, Bit Subs, Lift Subs
Miscellaneous Spare Parts, Hand Tools, Fire Extinguishers, Etc.

DRILL PIPE/COLLARS

Approximately 3782' (122-Joints) of 4-1/2", 16.60#, Grade E, Range 2 Drill Pipe, White Band, w/4-1/2"XH Connections
Approximately 2,821' (91-Joints) of 4-1/2", 16.60#, Grade E, Range 2 Drill Pipe, Yellow Band, w/4-1/2"XH Connections
(13) 6-1/4"OD x 2-1/4"ID x Approximately 31'L Slick HB Drill Collars, w/4-1/2"XH Connections