



MAC 400 8500' DRILLING RIG-4.300.000





DRAWWORKS

MAC 400 S/D Drwwks p/b CAT 3408 475 HP Diesel Eng (completely overhauled, new long block in summer of 2005 by CAT dealer), LEBUS Grooved f/1-1/8" Line, FOSTER Makeup & Breakout Catheads, TWIN DISC Torque Converter, Skid Mtd, PJ SERVICE 21'H x 40'L Mud Boated Sub Base (Bottom of Base Replaced this Month)



MAST & SUB

PJ SERVICE 96'H Cantilevered Mast, 300,000# SHL, w/Crown Block, Racking Boards & Tong Counterweight; 14' x 8' x 34'L One-Piece Substructure, 400,000# SHL (Built New 2006)



PUMP

GARDNER-DENVER FXN Duplex Mud Pump w/WICHITA Air Clutch, Belt Drive, Skidded & Mud Boated, 3" Vibrator Hose, p/b CAT 3408 475 HP Diesel Engine



HOUSES

Fuel Tank/Doghouse Combo: 40'L Doghouse w/Round Top, Fuel Tank, Knowledge Box w/DRILLOGRAPH Gas Detector, Master Skidded

Generator House: Includes (2) 125 KWs, Each p/b DETROIT 6-71 Diesel Eng

ROTATING/TRAVELING/AUXILIARY EQUIPMENT

18" x 44" Rotary Table (Rebuilt & Purchased in 10/2005); 60-Ton Swivel; 4-1/4" Square Kelly; TSM 4-1/4" Square Kelly Drive Bushing; McKISSICK 3-Sheave Traveling Block w/BJ 460 Hook; Elevator Links; 40'L Center Tub; (5) 36'L Mud Boated Pipe Tubes; T/A Derrick Dolly; Vertical Water Tank; Approx 4000' of Water Hose; Numerous Rig Related Tools, Expendables, Tongs, Elevators & Slips



OIME SL 1500 DRILLING RIG- 14.500.000

All Refurbished June-August of 2005





DEPTH RATING

18,000'

DRAWWORKS

OIME SL 1500 1-1/4 DL

BRAKE

PARMAC 342 Hydromatic

ENGINES

(3) CAT 3412 Engines, S/Ns-81Z11431 & 81708039

MAST

PYRAMID 146 x 23' 815,000# SHL w/6-Sheave Crown

SUBSTRUCTURE

PYRAMID 22.5' KB Swing-Up





PUMPS

BREWSTER B-1300T, S/N-13P006, p/b CAT 3512, S/N-49Y00979, w/5" x 6" Charge Pump
(Rebuilt)

OILWELL PT1100A, S/N-P199A61, p/b CAT 3508, S/N-95Y01254, w/5" x 6" Charge Pump



(Rebuilt)



ROTATING EQUIPMENT

PYRAMID HACKER 275 Rotary Table
GARDNER-DENVER 400-Ton Swivel
5-1/4" x 44' Hex Kelly w/Hydraulic Kelly Spinner

TRAVELING EQUIPMENT

SOWA 350-Ton Block/Hook Combination w/(5) Sheaves

WELL CONTROL EQUIPMENT

HYDRIL GK 11" 10,000 PSI Annular Blowout Preventer
CAMERON Type U 11" 10,000 PSI Double Blowout Preventer
CAMERON Type U 11" 10,000 PSI Single Blowout Preventer
CRESS SPECIALTIES 6-Station Accumulator Unit



WKM HCR 4-1/16" 10,000 PSI Choke Manifold
WKM 4-1/16" Manual Choke Manifold

RIG HOUSES

ALBERTA LABOUR 12'W x 54'L Toolpusher's Trailer, S/N-00681, w/(2) Bedrooms, (2) Bathrooms, Full Kitchen, (2) Separate Office Areas, Insulated, Skidded
1998 ALBERTA FAB 10'W x 54'L Toolpusher's Trailer
8'W x 38'L Doghouse
10'W x 48'L Parts/Change House
12'W x 40'L Mud House w/(5) 5" x 8" Centrifugal Pumps



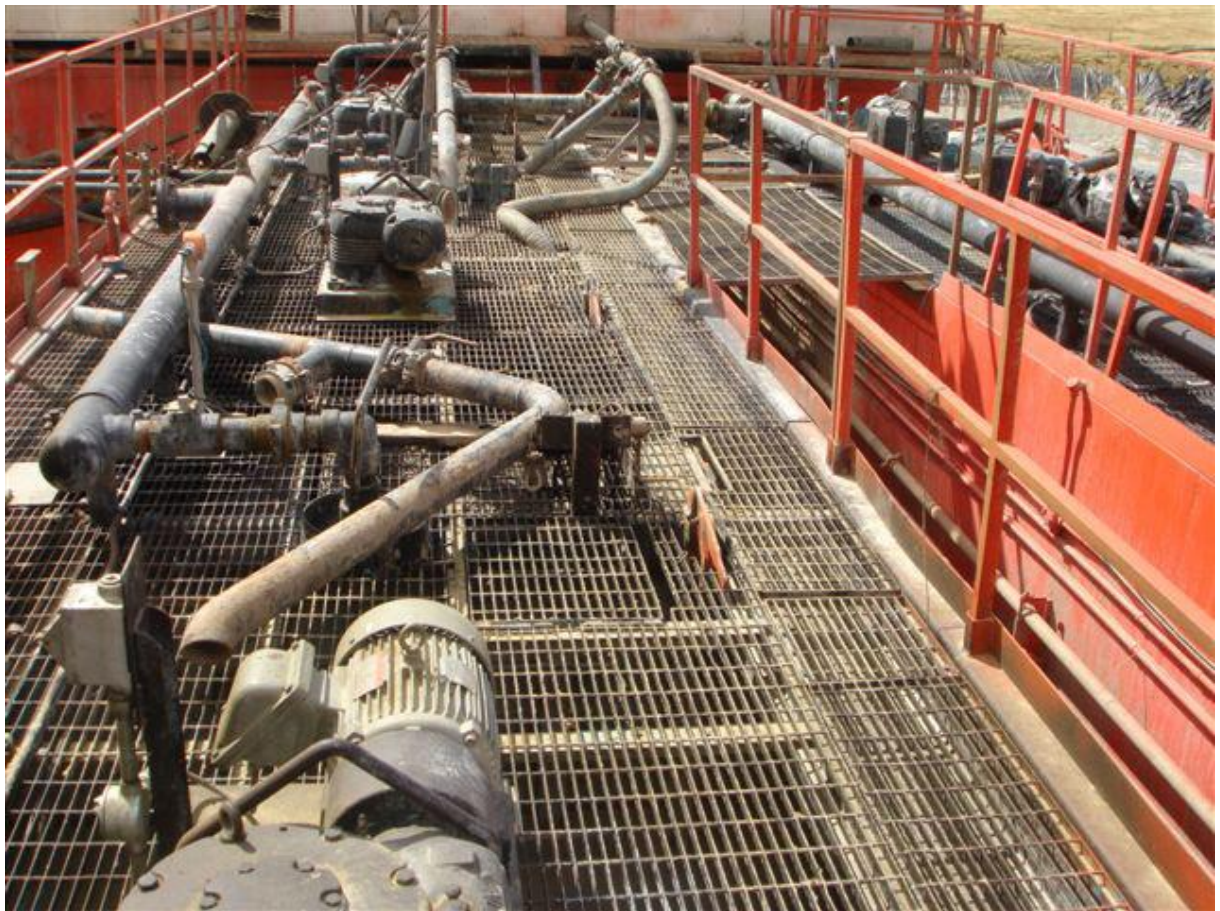


GENERATORS

- (2) CAT 3412 550 KW, S/Ns-6FA67035 & 6FA65093
- GD Electra Saver II Air Compressor, 480-Volt, p/b Diesel Engine
- GD PL-Series Air Compressor p/b Diesel Engine
- MUD SYSTEM
- (5) 5" x 6" Centrifugals w/60 HP Electric Motor
- 3-Pit System w/(8) Mud Agitators, 1800-Barrel System, 12'W x 8'H x 46'L
- GALLAGHER 5" x 6" Pit Pump
- (7) RADICON Mud Mixers, Each p/b 10 HP Motor
- (2) DOUBLE LIFE Linear Shale Shakers
- SWACO 2-Cone Desander
- DOUBLE LIFE 8-Cone Desilter

WATER/FUEL TANKS

- 10'W x 40'L 400-Barrel Water Tank
- 8'W x 33'L 12,300-Gallon Fuel Tank
- 8'W x 24'L 7000-Gallon Fuel Tank
- 150 HP Boiler (In Deck, New 2006)



HANDLING TOOLS

Hydraulic Pipe Spinners, Makeup & Breakout Catheads, (2) Hydraulic Winches, Air Winch

AUXILIARY EQUIPMENT

TOTCO 700,000# Capacity Weight Indicator, VARCO Bushing

DRILL PIPE

(140 Joints) 4-1/2", 16.60 Lb, Grade S-135, 6-1/8", HB & PC
(250 Joints) 4-1/2", 16.60 Lb., Grade X-95, 6-1/4", HB, PC



DRILL COLLARS

(24) 6-1/2" x 4-1/2'XH Drill Collars (New)

(2) 8" x 6-5/8"Reg Drill Collars